

INSTALLATION INSTRUCTIONS

sūsa Oil Filter Spacer Assembly

Part # 19-SPS76-20

Part # 19-SPS76-22

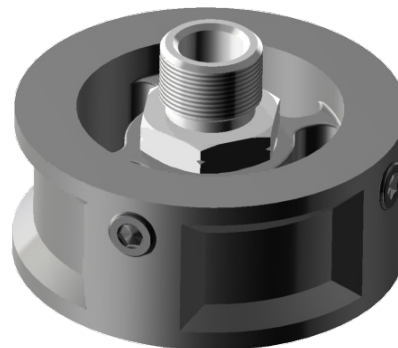
Part # 19-SPS76-34

Please read these instructions completely before beginning installation.

KIT CONTENTS

QTY.	DESCRIPTION
1	Oil Filter Spacer with 1/8"-27 NPT ports & plugs
1	Extension screw for oil filter stem
1	O-ring for oil filter mount surface

PART NUMBER	OIL FILTER STEM
19-SPS76-20	M20x1.5
19-SPS76-22	M22x1.5
19-SPS76-34	3/4"-16



INSTALLATION

This oil filter spacer is designed to allow installation of a sandwich adapter plate (sold separately) on applications with a recessed oil filter mount. It also includes two 1/8"-27 NPT ports for sending unit installation.

Part 1: Vehicle preparation

1. Prepare the vehicle for installation: allow to cool completely. Remove factory engine oil filter and clean the oil filter landing of oil and debris.

Part 2: NPT plug and/or sending unit installation

NOTE: The port plugs provided are loosely inserted into the ports to prevent loss during shipment and are NOT sealed. Installer will determine the use for the ports and either fully install the port plugs provided or install an appropriate sending unit into the ports during installation.

2. Remove the 1/8"-27 NPT port plugs.
3. Apply thread sealant to male pipe threads if not pre-applied. If PTFE tape is used it should be wrapped 1-1/2 to 2 turns in clockwise direction when viewed from the pipe thread end. **CAUTION:** More than two turns of tape may cause distortion or cracking of the port.
4. Screw the plug or sending unit into the port to the finger tight position.

IMPORTANT

The oil filter spacer is machined with 1/8"-27 NPT tapered threaded ports and require thread sealant for proper thread lubrication & sealing.

5. Wrench tighten the plug or sending unit to 2-3 turns-from-finger-tight (T.F.F.T.).

Part 3: Oil filter spacer installation

6. Lubricate large O-ring with oil and insert into O-ring groove on rear of oil filter spacer.
7. Match oil filter spacer onto engine's oil filter landing.
8. Insert extension screw through oil filter spacer center and thread onto engine oil filter stem.
9. Tighten extension screw to 20 lb.-ft. (27.1 Nm) or to factory specifications of engine oil filter.
10. Ensure adequate clearance of oil filter spacer and any installed sending unit around any moving parts, exhaust systems, or sharp edges that could cause component failure or interference.
11. Optional: Install sandwich plate adapter onto the oil filter spacer per instructions provided with that part.
12. Install engine oil filter to factory specifications.

Warning: Installation should only be attempted by those with mechanical skills and experience working on vehicles. Standard safety precautions consistent with the tools and dangers of automotive work should be followed to protect from injury. Specifically, wear protective equipment, take care to stabilize the vehicle on a level surface, engage the parking brake, and allow vehicle to cool before attention installation; failure to comply can result in injury and/or damage to equipment.